



Regis Hotelschiff GmbH

MS Thomas Hardy

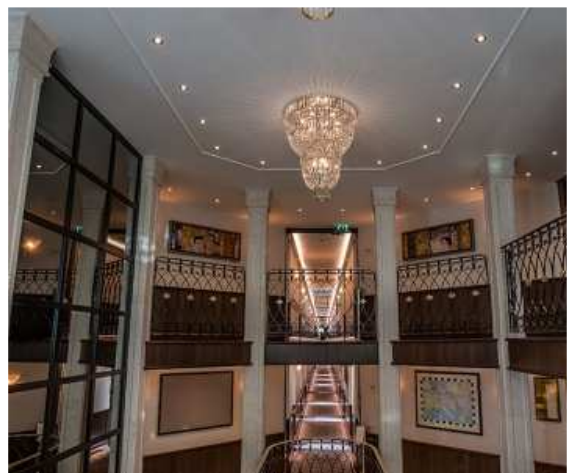


Technical data:

Built:	2016
Length:	135,00 m
Breadth:	11,45 m
Draught:	1,50 m
Cabins:	88
Voltage :	230 Volt

Endowment:

Elegant entrance hall with front desk and a boutique.





Regis Hotelschiff GmbH

Enjoy a rich breakfast buffet in the morning in the panorama-restaurant.



End the day in the lovely panoramic lounge.



Enjoy the relaxed atmosphere at the bar.





Regis Hotelschiff GmbH

Modern fitness area with sauna and steambath.



Cabins:

**84 cabins (approx. 17 sq) and
4 suites (approx. 25 sq)**

On the upper and middle deck with big panoramic windows and french balcony.



Interior:

Sat-TV flat-screen, minibar, safe, hairdryer, air-conditioning, telephone, shower/WC, coffee- and tee making facilities, small sitting area, separate desk.





Regis Hotelschiff GmbH

The suites also have a balcony with sitting area.

